

Customer :

customer

Customer part :

customer part

Comment :

Comment

S1=0.02

S2=0.35

Tmax=436

Tp S2=475.0

PI=0.07

HI=37

Sample =8925.3

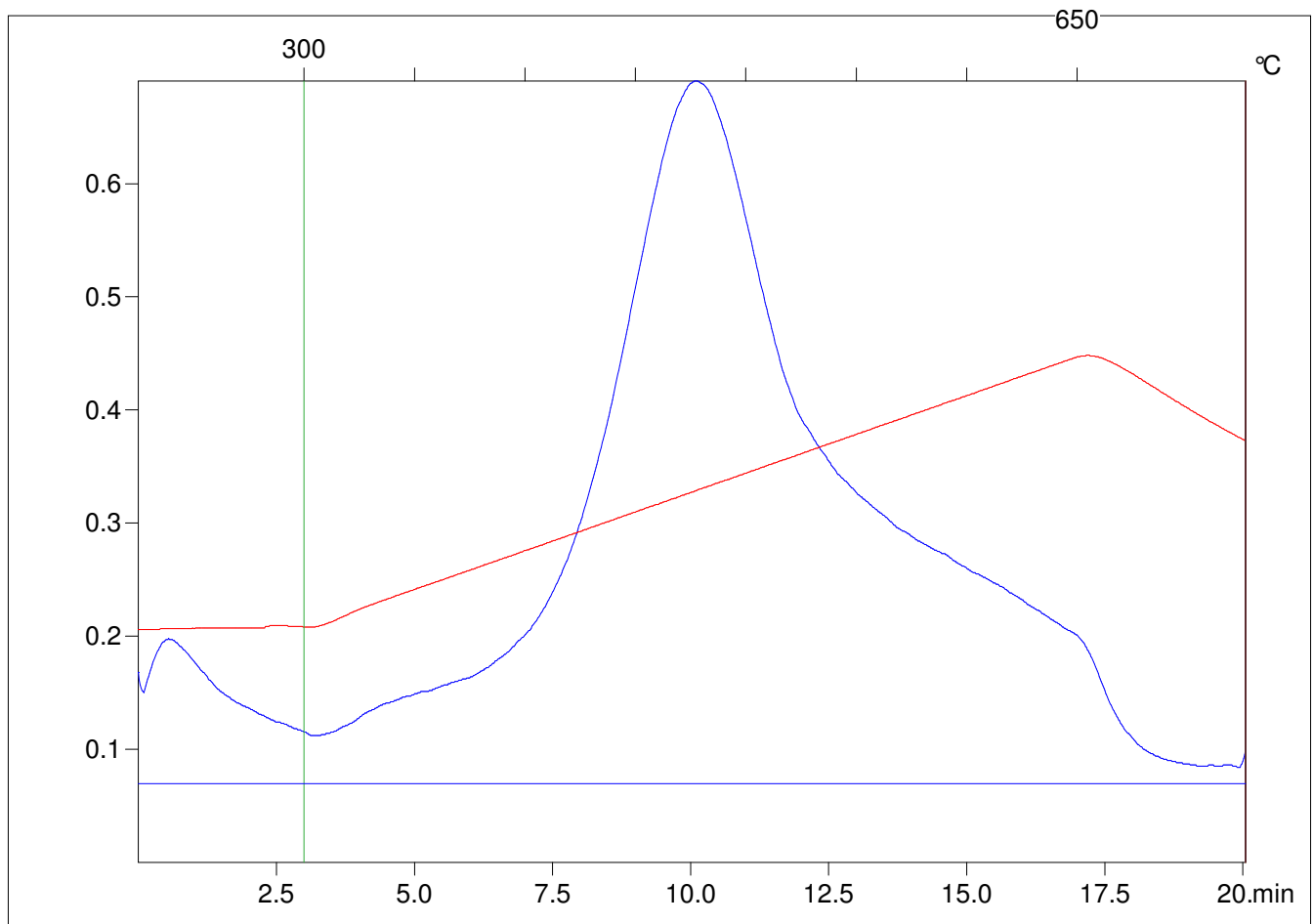
Method =Bulk Rock

Cycle=Basic

KFID(10*9)=1167

Qty =70.7

TOC=0.94



C:\VINC\PK141015\PK059.R00 : FID pyrolysis graphic

State

Pyro Status

Oxi Status